

National Association of Women Artists Collection. Commissioned work is in many private collections as well as public arenas.

Her sculptures, ranging from small and medium-sized table pieces up to life size, are done in a classical realist style. She seeks to capture in these figures, busts, and bas-reliefs what is timeless and eternal and yet of the current moment. She works mostly from life in clay or wax, models with careful attention to anatomical accuracy imbuing each figure with a life like grace. They are then cast in bronze at a foundry in limited editions.

In several of her female pieces, the light green patina of the dress is in contrast to the bronze color of the figure and the darkness of the hair. These figures are modern, but with a classical elegance that is reminiscent of the ancient Greek – the spirit and the body are one. Her children's figures and heads are solid forms, expressing compressed energy.

In "Henry at Three Months," her grandchild is depicted with a half smile, a gentleness and strength.

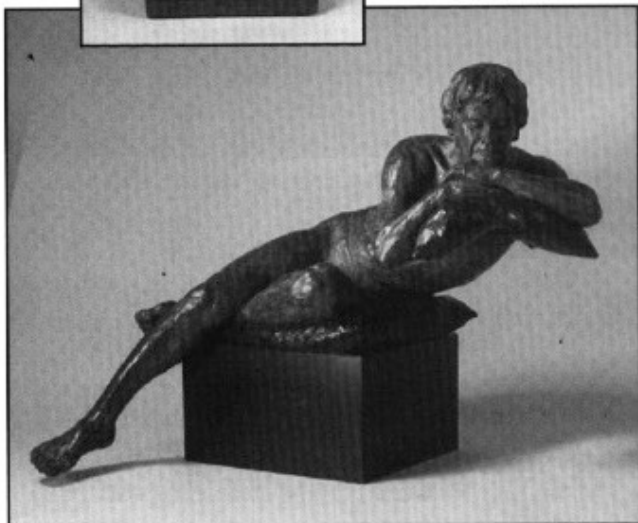
In all her work there is a plastic vigor and a sense of an inner life. The overwhelming impression is of refinement, a gentle sweetness, achieved partly by a flowing design, partly by the delicacy of the execution and the sureness of her technique. Since her move to Wyoming, living close to nature has led to a second body of work consisting of small delicate bronze trees, cast directly from interestingly shaped natural branches and inhabited by birds.

Amy's contributions to the CLWAC continue in her role as a Permanent Advisor. Her editorial and proofreading skills are called upon constantly. Her artistic achievements and national recognition continue to bring luster to the club's history. The board of directors always looks forward to Amy's New York visits and is proud to have her as our honored member.

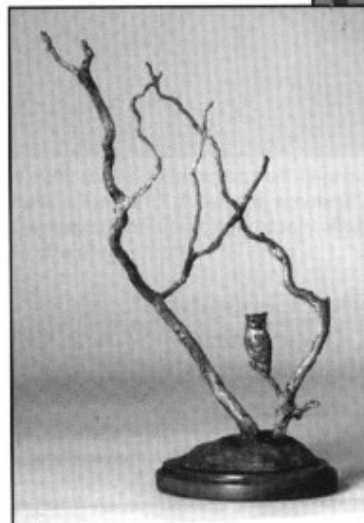


"Henry at Three Months," bronze, 9"h x 6"w x 6"d.

"Dreamer," bronze, 19"h x 24"w X 18"d.



"Young Man Reading," bronze commissioned for The Center for the Arts, Jackson, WY, life size.



"Great Horned Owl," bronze, 14"h x 8"w x 7"d.